

| COORDINATE SCHEDULE | | | | | | |
|--|------------------|---------------|-------|-------|------------|--------|
| MARK | MGA CO-ORDINATES | | CLASS | ORDER | METHOD | STATE |
| | EASTINGS | NORTHINGS | | | | |
| PM 32521 | 501 262.037 | 6 010 777.197 | A | 1 | FROM SCIMS | FOUND |
| PM 32522 | 501 245.777 | 6 010 791.186 | B | 2 | FROM SCIMS | FOUND |
| SSM 160720 | 501 477.978 | 6 010 748.085 | D | 4 | FROM SCIMS | FOUND |
| SSM 164657 | 501 286.536 | 6 010 943.591 | D | 4 | FROM SCIMS | FOUND |
| SSM 177265 | 501 568.602 | 6 010 627.041 | D | 4 | FROM SCIMS | FOUND |
| SSM 196121 | 501 343.716 | 6 010 651.612 | D | N/A | TRAVERSE | PLACED |
| SSM 196122 | 501 492.632 | 6 010 651.917 | D | N/A | TRAVERSE | PLACED |
| DATE OF SCIMS COORDINATES 22-05-2018 MGA ZONE 55 MGA DATUM GDA94 | | | | | | |
| COMBINED SCALE FACTOR OF 0.999566 | | | | | | |

| HEIGHT SCHEDULE | | | | | |
|---|-----------|-------|-------|-------------------------|--------|
| MARK | AHD VALUE | CLASS | ORDER | HEIGHT DATUM VALIDATION | STATE |
| PM 32521 | 200.748 | LB | L2 | FROM SCIMS | FOUND |
| PM 32522 | 200.494 | LB | L2 | FROM SCIMS | FOUND |
| SSM 164657 | 199.901 | LD | L4 | FROM SCIMS | FOUND |
| SSM 196121 | 200.339 | LD | N/A | | PLACED |
| SSM 196122 | 208.561 | LD | N/A | | PLACED |
| DATE OF SCIMS AHD VALUES: 22-05-2018 HEIGHT DATUM AHD71 | | | | | |

| HEIGHT DIFFERENCE SCHEDULE | | | |
|----------------------------|------------|-------------------|------------------------|
| FROM | TO | HEIGHT DIFFERENCE | METHOD |
| SSM 164657 | PM 32521 | -0.846 | DIFFERENTIAL LEVELLING |
| PM 32521 | PM 32522 | 0.272 | DIFFERENTIAL LEVELLING |
| PM 32522 | SSM 196121 | 0.136 | DIFFERENTIAL LEVELLING |
| SSM 196121 | SSM 196122 | -8.222 | DIFFERENTIAL LEVELLING |
| SSM 196122 | SSM 164657 | 8.658 | DIFFERENTIAL LEVELLING |
| HEIGHT DATUM: AHD71 | | | |

| GNSS VALIDATION SCHEDULE | | | | |
|--------------------------|------------|--------------|----------|-----------|
| FROM | TO | GRID BEARING | DISTANCE | METHOD |
| PM 32521 | SSM 160720 | 97°40'41" | 217.966 | CORS NRTK |
| | | 97°40'41" | 217.989 | SCIMS |
| SSM 160720 | SSM 177265 | 143°10'45" | 151.286 | CORS NRTK |
| | | 143°10'42" | 151.275 | SCIMS |

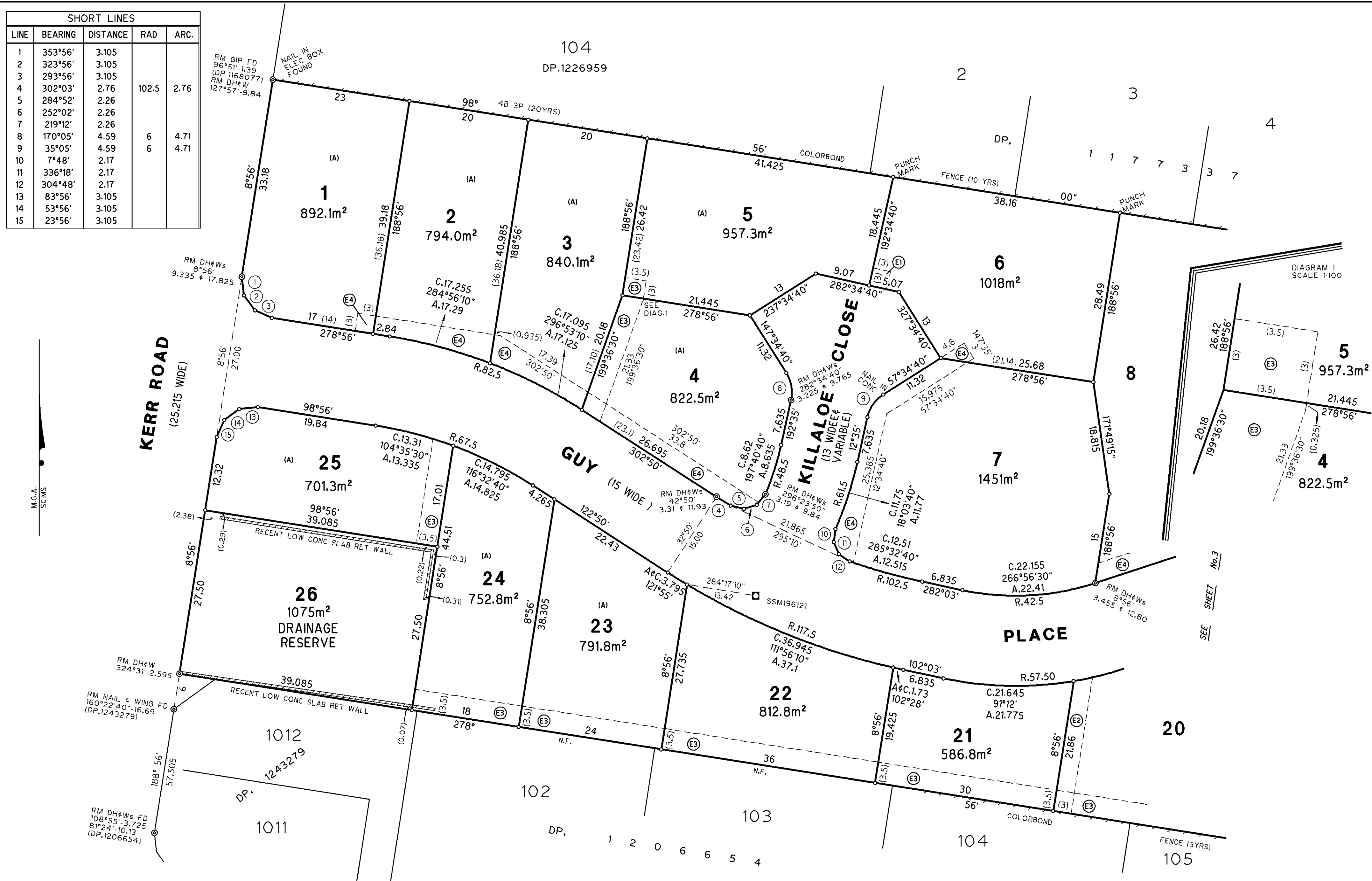



| SHORT LINES | | | | |
|-------------|---------|----------|-------|------|
| LINE | BEARING | DISTANCE | RAD | ARC. |
| 1 | 353°56' | 3.105 | | |
| 2 | 323°56' | 3.105 | | |
| 3 | 293°56' | 3.105 | | |
| 4 | 302°03' | 2.76 | 102.5 | 2.76 |
| 5 | 284°52' | 2.26 | | |
| 6 | 252°02' | 2.26 | | |
| 7 | 219°12' | 2.26 | | |
| 8 | 170°05' | 4.59 | 6 | 4.71 |
| 9 | 35°05' | 4.59 | 6 | 4.71 |
| 10 | 7°48' | 2.17 | | |
| 11 | 336°18' | 2.17 | | |
| 12 | 304°48' | 2.17 | | |
| 13 | 83°56' | 3.105 | | |
| 14 | 53°56' | 3.105 | | |
| 15 | 23°56' | 3.105 | | |

Req:R341333 /Doc:DP 1246427 P /Rev:27-Sep-2018 /Prt:28-Sep-2018 03:31 /Seq:2 of 6
Ref:lrs:eplan-eplan FOR SURVEYORS USE ONLY /src:W

- (A) POSITIVE COVENANT (ASSET PROTECTION ZONE)
- (E1) EASEMENT FOR DRAINAGE OF WATER 3 WIDE.
- (E2) EASEMENT FOR DRAINAGE OF SEWAGE 3 WIDE.
- (E3) EASEMENT FOR DRAINAGE OF WATER AND SEWAGE 3.5 WIDE.
- (E4) EASEMENT FOR DRAINAGE OF SEWAGE VARIABLE WIDTH.

| | | | | | | | | | | | | | |
|-------------|----|----|----|----|----|----|----|----|-----|-----|-----|-----|-----|
| 10 | 20 | 30 | 40 | 50 | 60 | 70 | 80 | 90 | 100 | 110 | 120 | 130 | 140 |
| Table of mm | | | | | | | | | | | | | |



| | | | | |
|---|--|--|--|-----------|
| Surveyor <u>RICHARD MUTAPE</u> Date Of Survey <u>15 June 2018</u> Surveyor's Reference <u>17236</u> | PLAN OF SUBDIVISION OF LOT 3 DP.1057228 | LGA <u>ALBURY CITY</u> Locality: <u>THURGOONA</u> Subdivision No. 4915 Lengths are in metres. Reduction Ratio 1: <u>400</u> | Registered  27.09.2018 | DP1246427 |
|---|--|--|--|-----------|

Req:R341333 /Doc:DP 1246427 P /Rev:27-Sep-2018 /Prt:28-Sep-2018 03:31 /Seq:3 of 6
Ref:lrs:eplan-eplan FOR SURVEYORS USE ONLY /src:W

- E2

EASEMENT FOR DRAINAGE OF SEWAGE 3 WIDE.
- E3

EASEMENT FOR DRAINAGE OF WATER AND SEWAGE 3.5 WIDE.
- E4

EASEMENT FOR DRAINAGE OF SEWAGE VARIABLE WIDTH.

Surveyor *RICHARD MUTAPE*

Date Of Survey *15 June 2018*

Surveyor's Reference *17236*

PLAN OF SUBDIVISION OF
LOT 3 DP.1057228

LGA **ALBURY CITY**
Locality: **THURGOONA**
Subdivision No. 4915

Registered
 27.09.2018

DP1246427

Lengths are in metres. Reduction Ratio 1 400

| | | | | | | | | | | | | | |
|-------------|----|----|----|----|----|----|----|----|-----|-----|-----|-----|-----|
| 10 | 20 | 30 | 40 | 50 | 60 | 70 | 80 | 90 | 100 | 110 | 120 | 130 | 140 |
| Table of mm | | | | | | | | | | | | | |

